

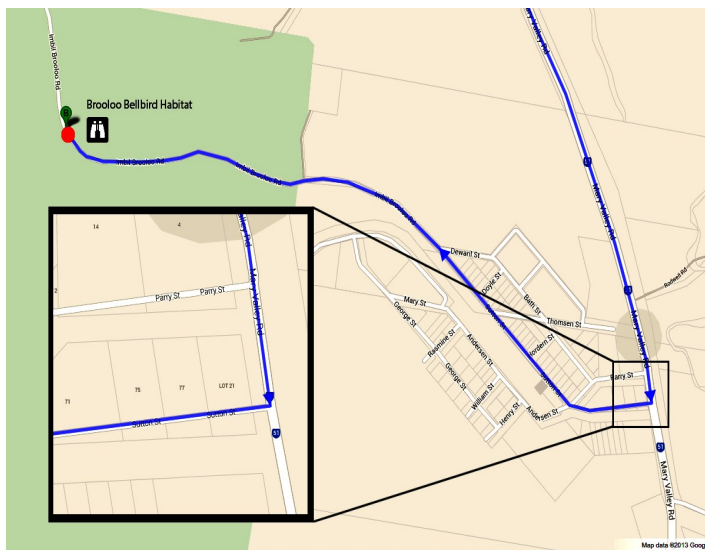
## About “Brooloo Bellbird Habitat”

“Brooloo Bellbird Habitat” is situated near the small community of “Brooloo” in the beautiful Mary Valley.

The official name of “Brooloo Bellbird Habitat” is the “George Burtenshaw Feature Protection Area Bellbird Habitat”.

Take a picnic lunch, blanket, and or tables and chairs; relax a while in the peaceful glade that is the “Brooloo Bellbird Habitat” while listening to the tinkling call of the Bell Miner, commonly referred to as the “Bellbird”.

Sitting by the small creek running through the Bellbird Habitat during the late afternoon will provide you with the delightful experience of observing these and other bird species as they come to bathe.



*Acknowledgement to Google Maps*

*Species listed compiled from records of  
COOLOOLA NATURE*



## BIRDS OF BROOLOO BELLBIRD HABITAT *Along the “Bird Trails of Cooloola”*



Bell Miner (A. Nielsen)

*Produced by K & A Nielsen*

*Cooloola Nature*

Ph - (07) 54 826721

Email - [cooloolanature@spiderweb.com.au](mailto:cooloolanature@spiderweb.com.au)

Website - [www.birdingcooloola.org.au](http://www.birdingcooloola.org.au)

\*For more information on “Bird Trails of Cooloola” visit [www.birdingcooloola.org.au](http://www.birdingcooloola.org.au)

*(All species listed recorded within Brooloo Bellbird Habitat & its’ immediate surrounds)*

**We value your input!**

*For networking purposes, please include with reports of additional sightings the Birding Society you are a member of, (if any), & for record verification, your contact details.*

**(Email [cooloolanature@spiderweb.com.au](mailto:cooloolanature@spiderweb.com.au))**

